

Stone / Pebble crete Plaster & Flooring

About Us

Instakrete is Pune Based Morbi Group venture who have been catering innovative building material products since 1983 & are leading solution providers of decorative coatings & plaster to beautify, Exterior, Interior & Landscaping spaces, Surfaces & Floorings.

With a wide spectrum of texture, color & patterns developed across our product basket, we have partnered with our esteemed patrons across all segments including Residential & commercial projects, hospitality, educational institutions, healthcare, Government authorities, hospitals & corporates.

Backed by an experienced team of applicators developed through a sustained effort by our team, we have emerged as a First Choice for many opinion makers, architects and consultants in this domain as we provide the widest range of products under one roof and cater to PAN India requirements.

Our Achievement

39+

YEARS OF RELIABLE
BUSINESS GROUP
HISTORY

25+

YEARS OF
EXPERTISE IN
TEXTURE PAINT
INDUSTRIES

150+

TEXTURE DESIGN &
FINISHES TO CHOOSE
FROM

500+

ACCOMPLISHED
PROJECTS

10 Lakh+

SQFT OF TEXTURE
WORK EXECUTED

350+

CORPORATE
CLIENTS

PAN-INDIA SERVICES

Features

- Fast & High bonding application.
- Economical & long lasting.
- Easy to Maintain, Repair & Recoat.
- Moisture, water & stain protection.
- Thin, lightweight & seamless application.
- Highly Customize with multiple colours & finish range.
- Great alternative of natural stone / finish / texture.
- Low VOC with Environment friendly Product.
- Expert application team equipped with latest tools & accessories.
- Ideal for any Interior, Exterior & Landscaping surfaces.

Showroom





About – “Aggregate Paving” is a handcrafted Fusion of traditional Art of in-situ decorative concrete rendition with vibrant base colours with multiple color aggregate options, the material offers several technically enhanced properties over the conventional Cementations wall renders. Can be used for Interior, exterior & Façade spaces, compound walls, concrete planters etc.

Composition - Stone Crete Plaster is composed of a mix of Grey / White cement, coarse aggregate (usually crushed stone), fine marble powder, polymers & chemicals.

Application - It is a self-drying, on site application. Its 1 coats plaster system having thickness of 8 to 10.00 mm. Ideal for exterior surfaces, facades of Government Institutes, commercial, residential, corporates buildings, educational Institutes, Farm House, Hotels & Resorts etc..

Colours & Shades – To be choose from the shade card.

Patterns / Effects -

- Vertical & horizontal Groove
- Up to 2 colour combination possible.
- Widest choice of pastel & mix natural aggregates.















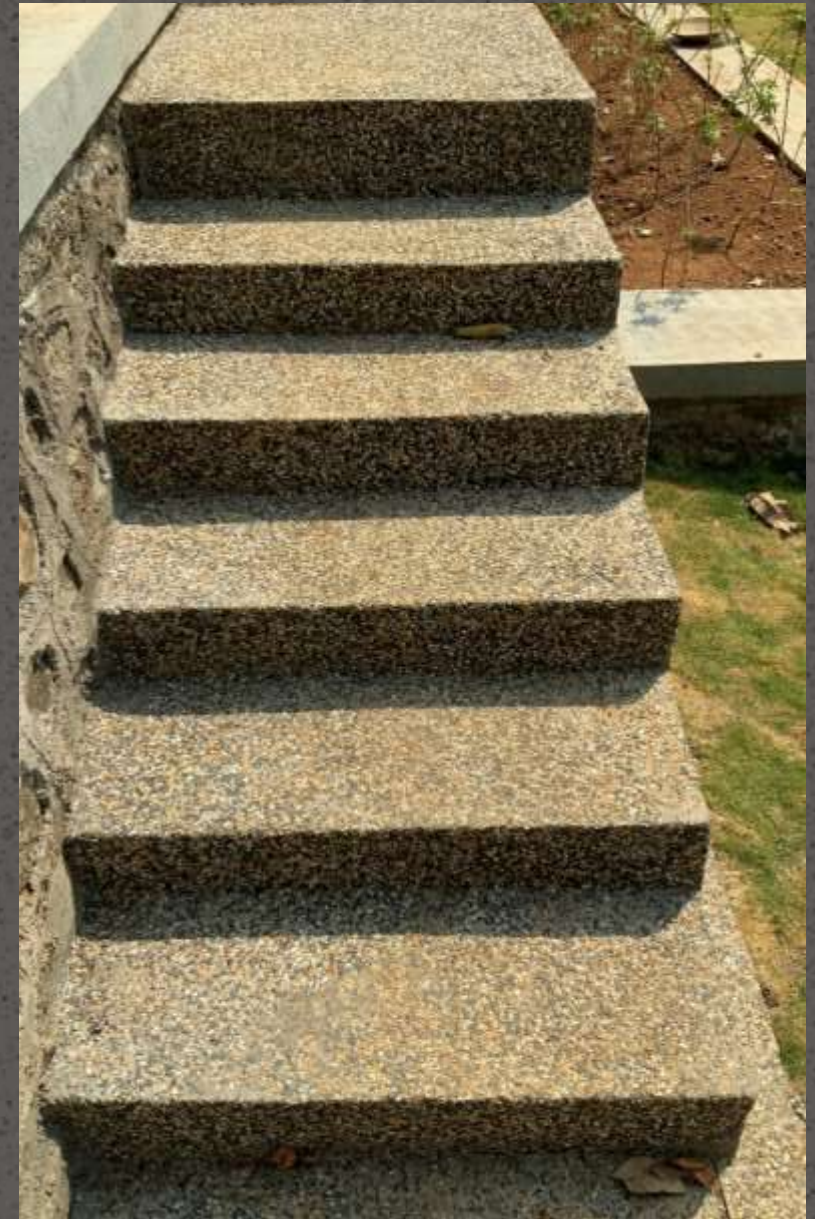














TEXTURE PALATE



CONCRETE



BRICK



STONE COAT



TRAVERTINE



INSTACOAT



STENCIL



STONECRETE



PEBBLECRETE



DHOLPUR

instakrete

CREATE YOUR OWN TEXTURE

InstaKrete
Coatings LLP

• Nav Maharashtra Society, Hotel Navratna Lane,
Near City Pride Theater, Satara Road, Pune - 411009

Rajeev Joshi ☎ +91 88303 28133

✉ info@instakrete.in

🌐 www.instakrete.in